



IMMEDIATE POSSESSION



THE MONARCH

1374 SQ.FT.

86 - 285 Chelsea Court

3 Bedrooms

3 Bathrooms

Single Garage

OPTIONS INCLUDED IN THIS HOME ARE:

- Minutes away from local amenities, including eco-park, green spaces, schools, & East Hills Shopping Centre
- Hardie Board siding exterior
- Driftwood standard colour palette with upgraded quartz countertops
- Entry level flex room & full bathroom
- L-shaped kitchen with optional peninsula for added seating & storage
- Upgraded semi-built-in kitchen with appliances
- Zebra blinds
- 4-Piece owner's ensuite
- EV rough-ins
- A/C rough-ins

COME VISIT OUR SHOWHOME

84 & 116 - 285 Chelsea Court, Chestermere, AB

Call May Vallo today at 825.540.0437 or email at mayvallo@tricohomes.com



SHOWHOME HOURS:

Mon - Thurs: 2pm - 8pm

Fri: Closed

Sat - Sun: 12pm - 5pm

PLUS RECEIVE YOUR OWN TRICO RED CARD



& ENJOY INCREDIBLE ONGOING SAVINGS & REWARDS FROM OUR PARTNERS & RETAILERS



Chelsea Court

TOWNHOMES

Trico Homes™

The Heart of Homebuilding®



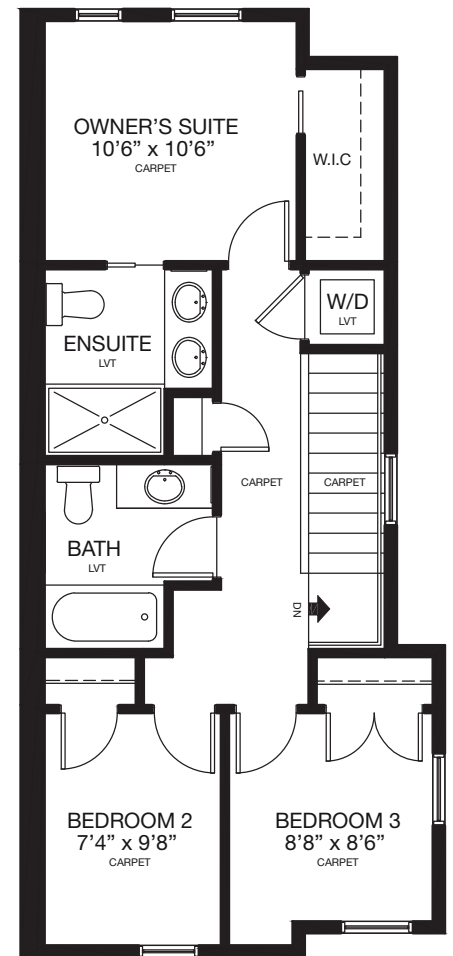
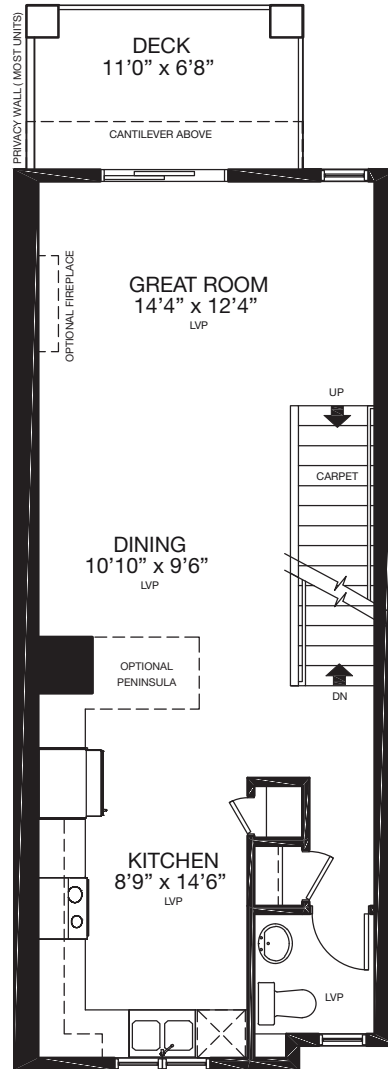
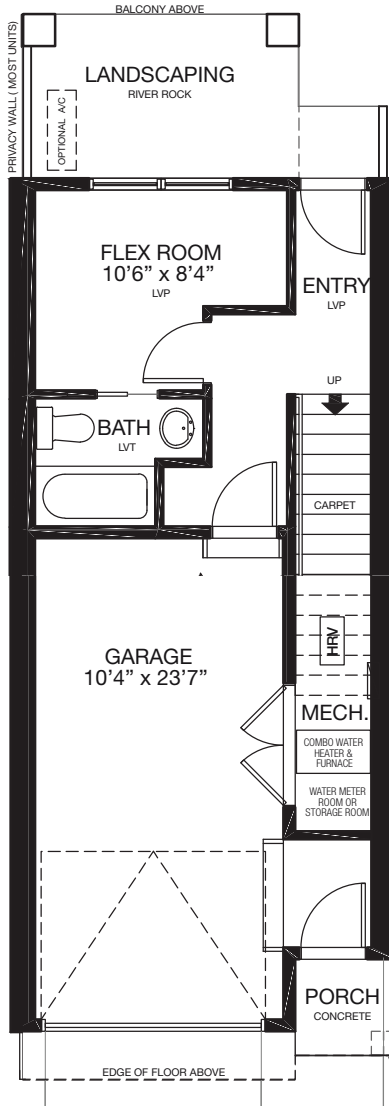
tricohomes.com



THE MONARCH

1374 SQ.FT.

86 - 285 Chelsea Court



Renderings are artist's conceptions only and may vary by community and lot selection. Prices, floorplans, specifications and dimensions are approximate and are subject to change without notice. E.&O.E. © All rights reserved, including the right if reproduction in the whole or in part without the permission of Trico Homes.

Plan updated December 12, 2025



tricohomes.com